

**Nokia Customer Care  
NEM-4 Series Cellular Phones**

# **5 – Disassembly Instructions**

**Table of Contents**

	<b>Page No</b>
Disassembly instructions.....	3
Assembly instructions .....	6
NEM-4 Dome Sheet Exchange .....	7

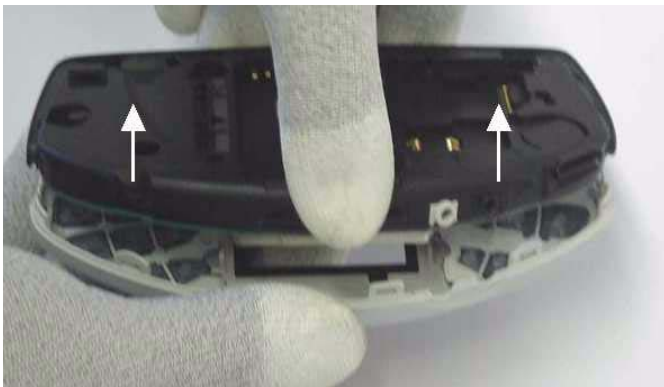
## Disassembly instructions



Press the Release Button before removing B-Cover.



The A-Cover is attached with snaps. Open both snaps before removing A-cover.



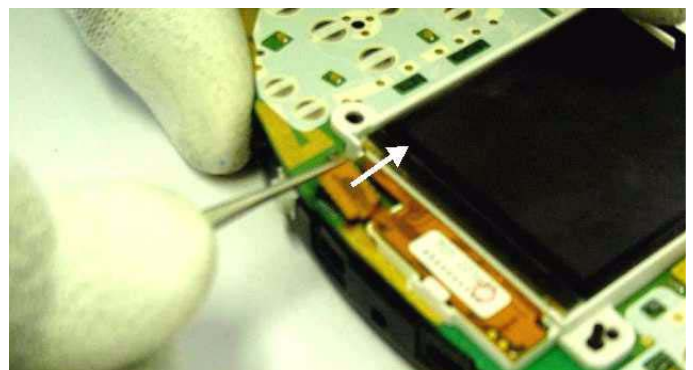
Remove A-cover and keymats.



Unscrew the Torx PLUS size 6 screws, using the order shown. For assembly, take reverse order and torque of 26Ncm. Press down the PWB with fingers.



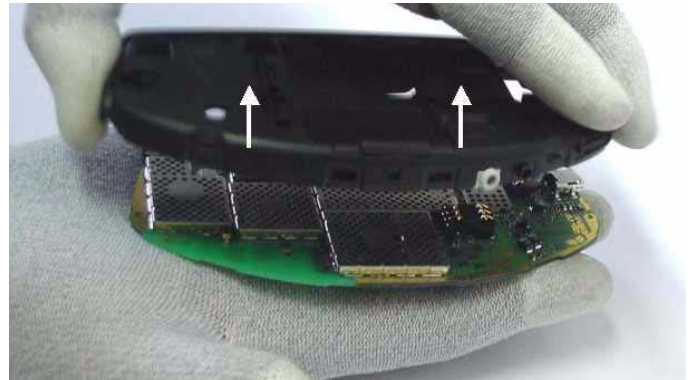
Remove UI-Shield.



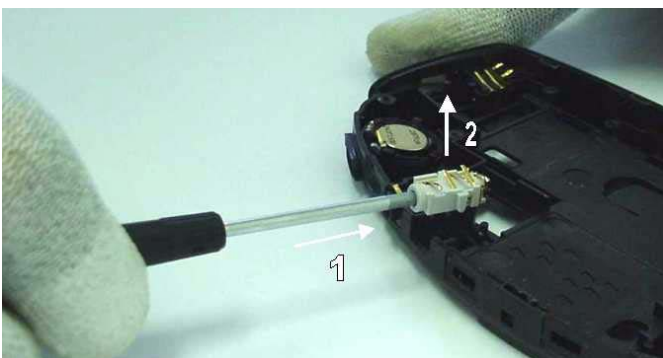
Open LCD Module's connector carefully with tweezers and remove LCD Module.



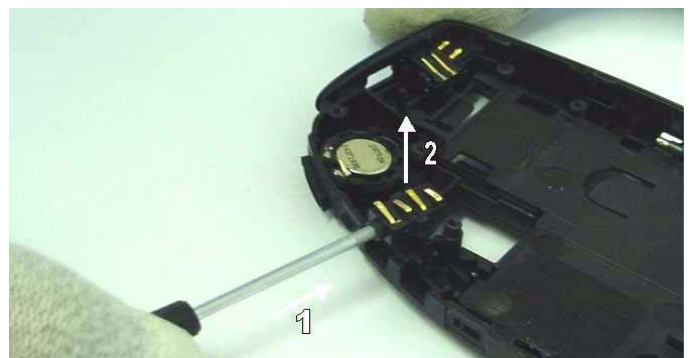
Always protect LCD with protection foil to avoid dust and scratches.



Take Engine from Chassis.



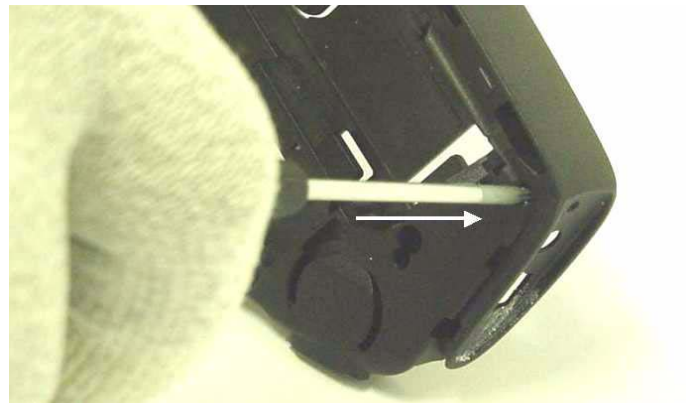
Remove Mono Jack from Chassis.



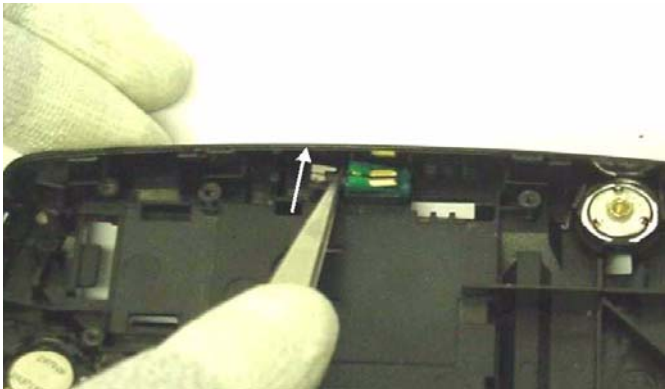
Remove Stereo Jack from Chassis.



Remove DC Connector from Chassis with Torx. Put Torx under the DC Connector (1) and bend (2).



Remove Microphone from Chassis with Torx. Put Torx hole behind Microphone and push carefully.



Remove the Vibra Motor from its guidance with tweezers.



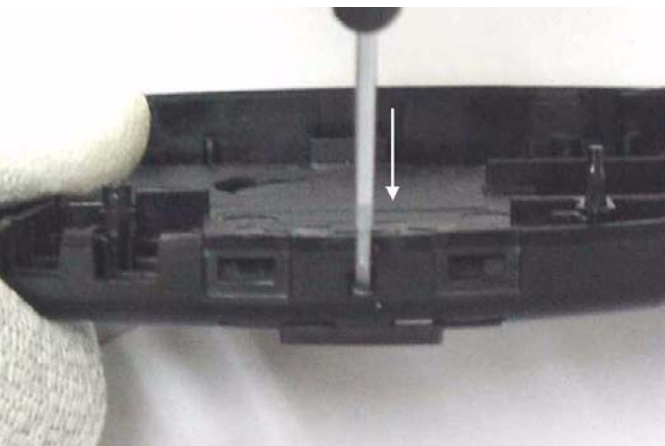
Remove Antenna from Chassis with tweezers.



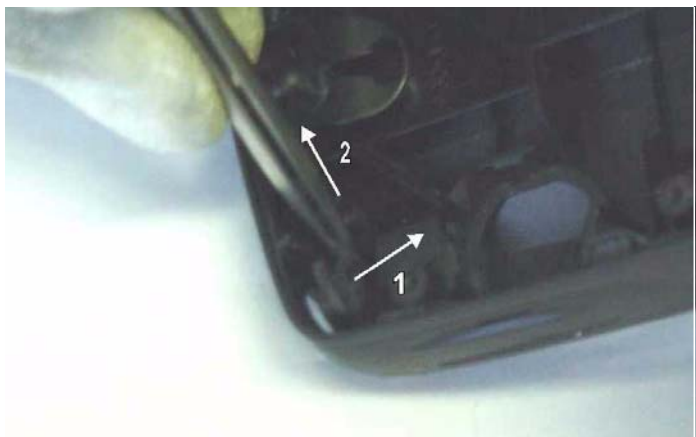
Remove HF Speaker from Chassis with screwdriver. Put screwdriver between Chassis and HF Speaker then bend screwdriver. Take care not to damage the snaps by bending them too much.



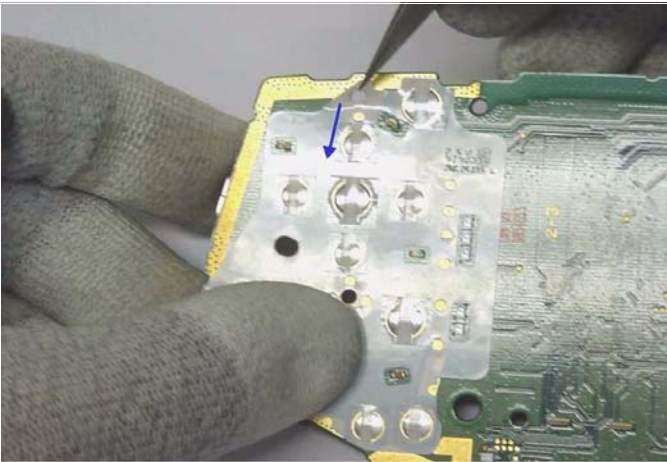
Remove Earpiece with screwdriver from Chassis by bending the snaps carefully.



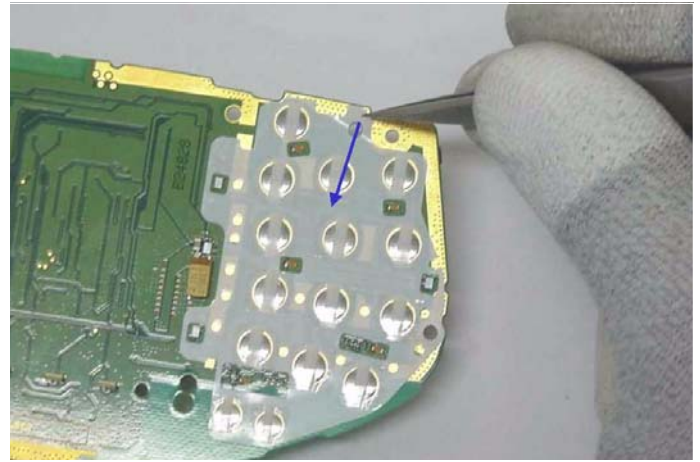
Remove Release Button with screwdriver from Chassis. Release Button is locked by small notch. Bend the chassis near the notch in order to release it.



Remove Power Key with tweezers.



Remove Domesheet with Tweezers from PWB Engine.



Remove Domesheet with Tweezers from PWB Engine.

## Assembly instructions

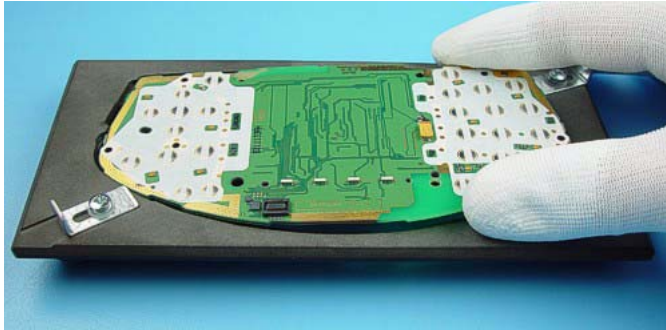


Note! The silicon gasket may stick in the PWB. Damaged and loose silicon gasket must be replaced with a spare part gasket.

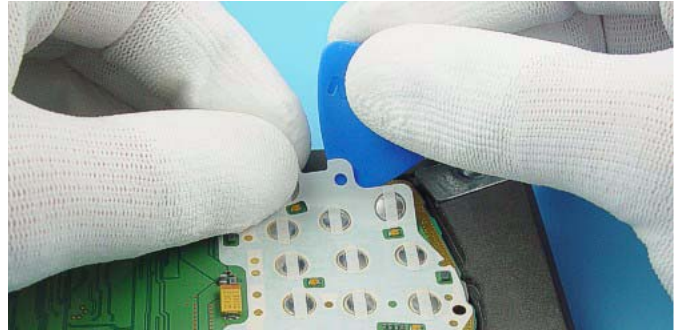


Replace damaged or loose silicon gasket with a spare part gasket. Fix the gasket carefully with tweezers in chassis.

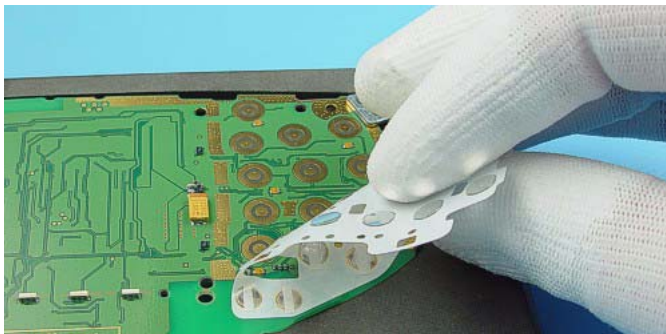
## NEM-4 Dome Sheet Exchange



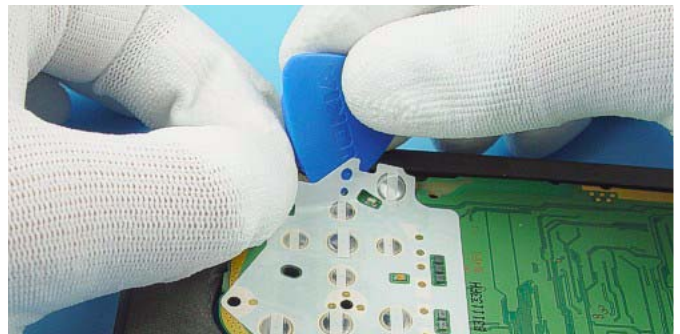
Put the PWB Module into the Soldering Jig.



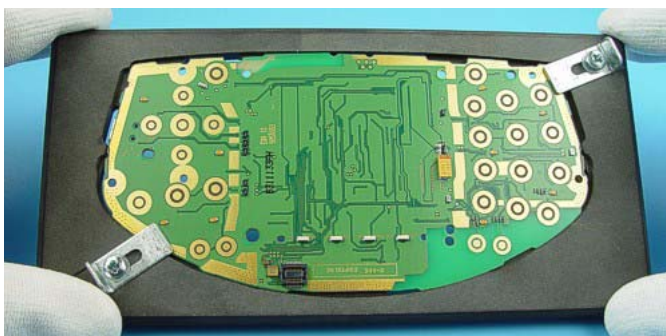
Use the SRT-6 to remove the faulty Dome Sheet. Place it under the Dome Sheet as shown in the picture and lift it up carefully from PWB Module.



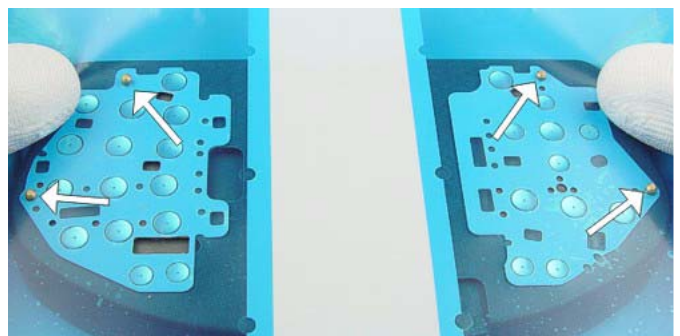
Take care about components on the PWB Module during removal of the Dome Sheet.



Use the same procedure also for the Dome Sheet Left.



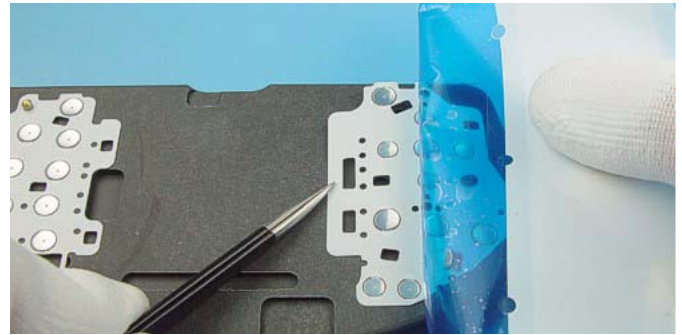
Clean the pads on the PWB Module with a clean cloth if necessary. Be carefully not damage the components on the PWB.



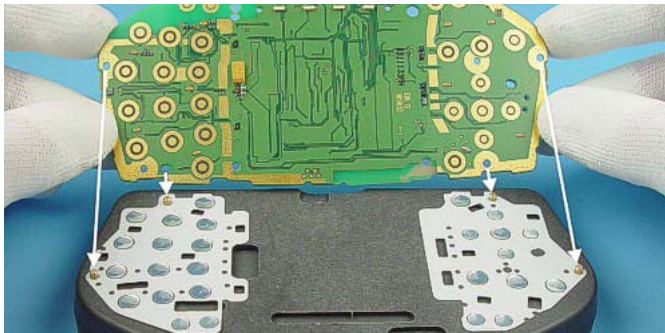
Put the new Dome Sheet onto the Dome Sheet Assembly Jig. Mind the guiding pins.



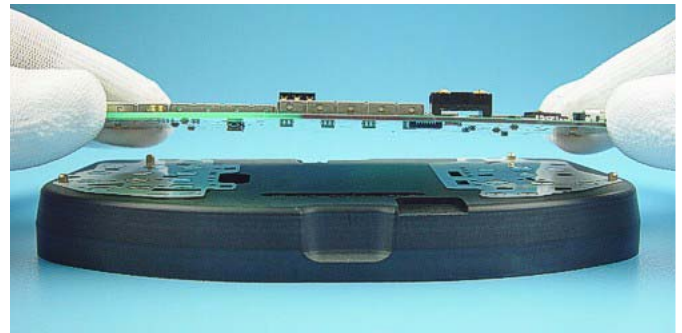
Remove the protection film. Tweezers can be used for retaining the Dome Sheet.



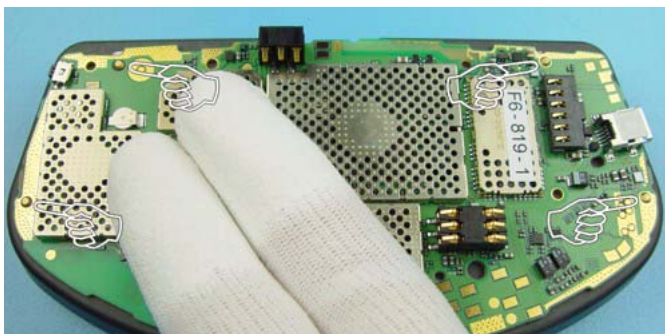
Use the same procedure also for the Dome Sheet Left.



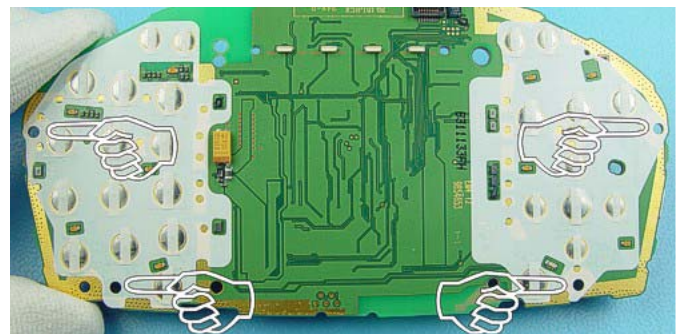
Arrows point to the right assembly position.



Put the PWB Module onto the Assembly Jig carefully.



Press on PWB Module after checking that all guiding pins are positioned correctly. Do not touch the spring contacts.



Finally check that the holes of Dome Sheet are centered to the PWB module holes. Ensure also, that there are no bubbles in Dome Sheet film.